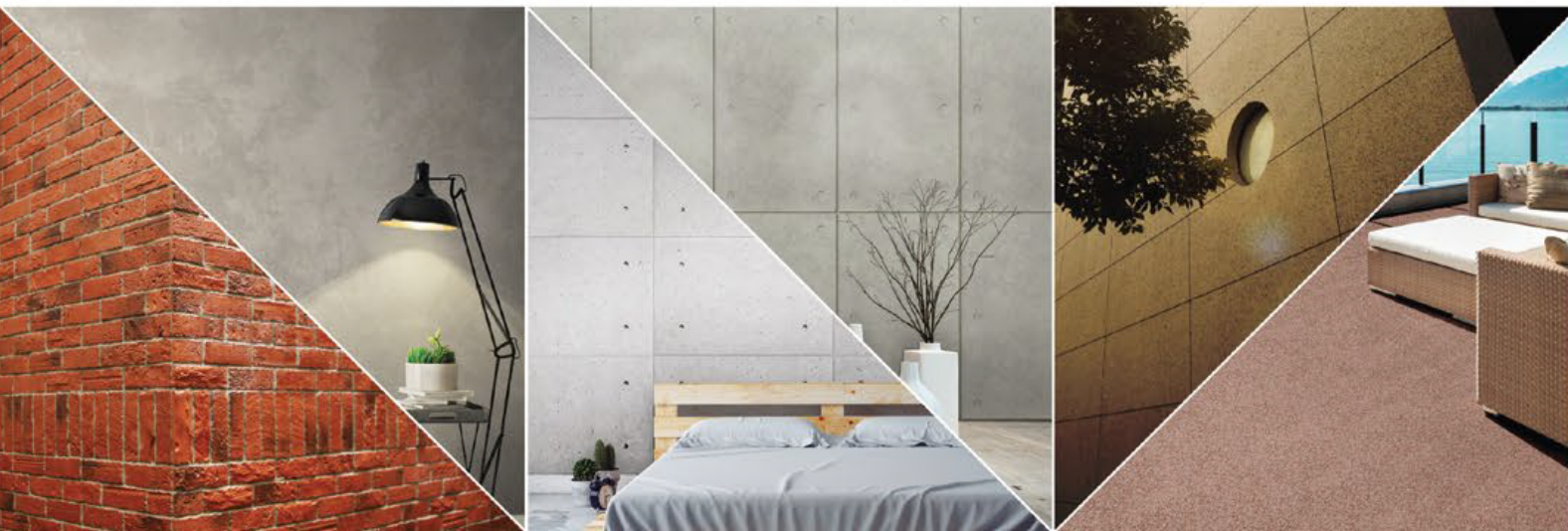


# WALL FINISH PROFESSIONALS

Wallhub | The Exclusive (Sole) Distributor in Singapore



BRICK & STONE VENEER • TEXTURE PAINT • KASTPANEL • ECES • TEXTURE COATING • PEBBLE STONE COATING

[www.wallhub.com.sg](http://www.wallhub.com.sg)

Instagram Facebook wallhubsg | Email: [sales@wallhub.com.sg](mailto:sales@wallhub.com.sg)

East Showroom | #01-38, Oxley Bizhub 2, 62 Ubi Road 1, S408734  
North Showroom | #01-10, Nordcom II, 2 Gambas Cres, S757044

wallhub

# Strato.®

INTERIOR TEXTURE PAINT COLLECTION



EDITION  
5.1



# Strato® CEMENT TEXTURE

Create everlasting look with Strato® Cement Texture. Whether you are going for the industrial, scandinavian, contemporary or minimalistic style, the backdrop of the cement texture can complete the look.



## Features

Crack Resistant



Low VOC & Odor



Formaldehyde & Lead Free



Green Choice, Water Based & Eco-friendly



Easy, Quick Application & DIY Friendly



Anti-chalking & Efflorescence



Applicable on Ceiling



Easy Maintenance



Easy to Touch Up



Matte Finishing



• **INTERIOR USE ONLY**  
For exterior options, please see **MONOKRETE**.





Granite Grey  
| **SCT-304**



Silver Grey | **SCT-301**



Natural Grey | **SCT-302**



Shark Grey | **SCT-303**



Silver Grey  
| **SCT-301**



Granite Grey  
| **SCT-304**



Granite Grey | **SCT-304**



Iron Grey | **SCT-305**

Metal Grey  
| **SCT-307**



Charcoal Grey | **SCT-306**



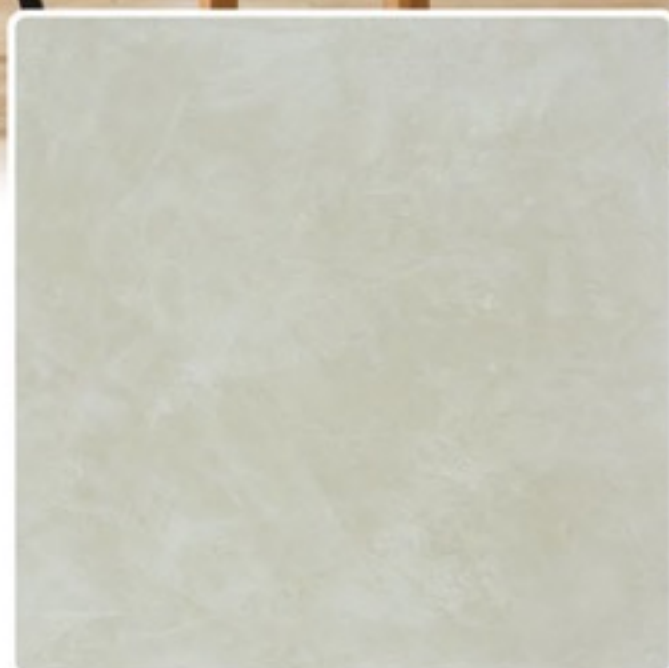
Metal Grey | **SCT-307**



Shadow Grey | **SCT-308**



□ Ashes Grey  
| SCT-309



Ashes Grey | SCT-309



Misty Grey | SCT-310



#### PACKING DATA:

1L Primer | 1L Texture Coat | 0.5L Topcoat (SR-Top 1)

COVERAGE: 6-7sqm (WALL) | 5-6sqm (CEILING)

## APPLICATION TECHNIQUE



APPLICATION VIDEO



### 1 Primer

Roll 2 layers of Strato® Primer on the entire surface. Allow 30 minutes to dry between the layers.

Tool: Roller

(The primer can be diluted with maximum 5% of clean water)



### 2 Sanding

Sand the entire surface in circular motion to ensure the surface is smooth.

Tool: 600 Grit Sand Paper



### 3 Texture Coat

Scrape Strato® Cement Texture Coat randomly to create pattern. Ensure the whole surface area is covered. Then apply second layer.

Tool: Stainless Steel Trowel

(Use a larger trowel for a larger pattern, a smaller trowel for smaller pattern)



### 4 Sanding (OPTIONAL)

Sand the entire surface in circular motion to enhance the pattern.

Tool: 600 Grit Sand Paper



### 5 Topcoat

Apply SR-Top 1 on entire surface using a dry sponge in circular motions.

**IMPORTANT:** Use a clean and dry sponge or cleaning cloth to wipe the excess topcoat before it dries to avoid the sponge marks.

Tool: Sponge / Cleaning Cloth

**IMPORTANT:** Color may vary on application technique & amount of material used.

Tools:



Trowel or Scraper



Sand Paper (600 Grit)



Roller



Cleaning Cloth



Sponge



# Strato.<sup>®</sup> VELOURS

Rich velvety layers of color to enhance the interior space. Each color brings out a different mood & ambience, find a color that matches your personality.

• **INTERIOR USE ONLY**  
For exterior options, please see **MONOKRETE**.

## Features

Crack Resistant



Low VOC & Odor



Formaldehyde & Lead Free



Green Choice, Water Based & Eco-friendly



Easy, Quick Application & DIY Friendly



Anti-chalking & Efflorescence



Applicable on Ceiling



Easy Maintenance



Easy to Touch Up



Matte Finishing





□ Brocade Blue  
| **SVL-406**



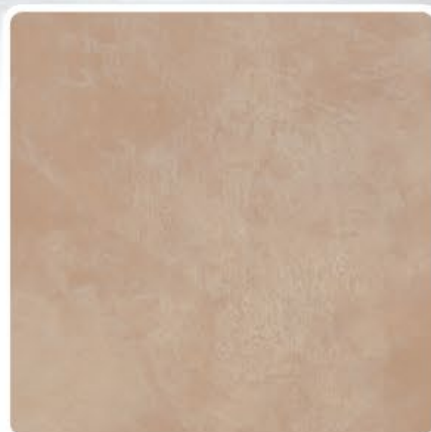
□ Summer Sahara  
| **SVL-404**



Cloudy Grey | **SVL-401**



Mushroom Beige | **SVL-402**



Hazel Wood | **SVL-403**



Summer Sahara | **SVL-404**



Walnut Leather | **SVL-405**



Brocade Blue | **SVL-406**





Deep Marine  
| **SVL-407**



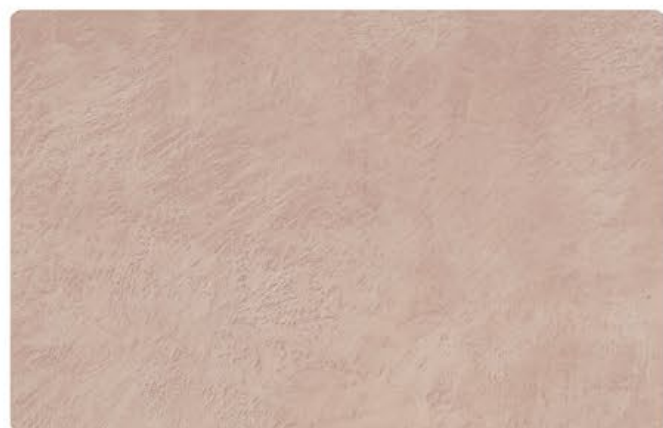
Deep Marine | **SVL-407**



Royal Denim | **SVL-408**



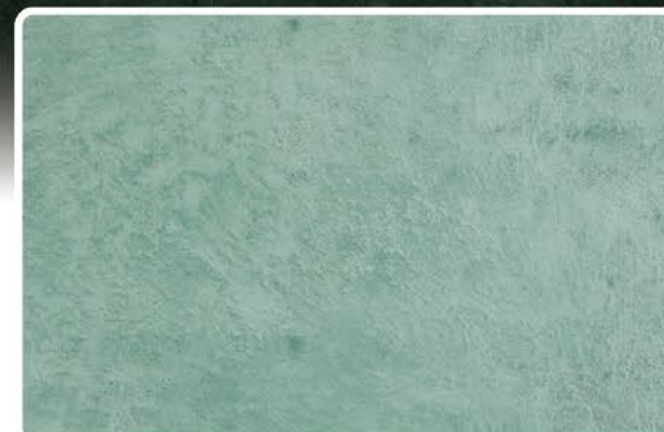
Violet Memory | **SVL-409**



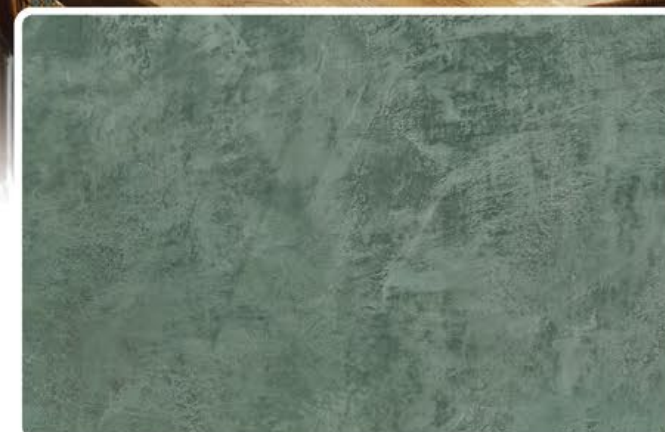
Rosy Mauve | **SVL-410**



Hunter Green  
| **SVL-413**



Frosted Mint | **SVL-411**



Vivid Emerald | **SVL-412**



Hunter Green | **SVL-413**



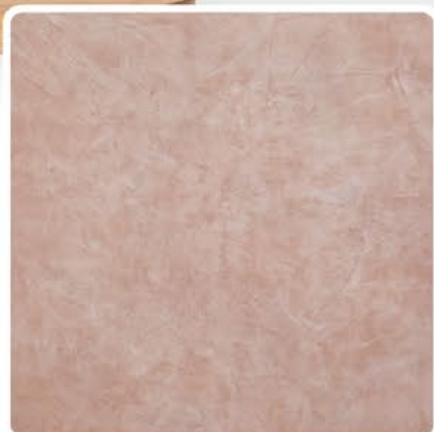
Herbal Garden | **SVL-414**



Flamingo Blush  
SVL-416



Lime Mist | SVL-415



Flamingo Blush | SVL-416



Vanilla Cream | SVL-417

Hazel Wood  
SVL-403



#### PACKING DATA:

1L Primer | 1L Texture Coat | 0.5L Topcoat (SR-Top 1)

COVERAGE: 6-7sqm (WALL) | 5-6sqm (CEILING)

## APPLICATION TECHNIQUE



APPLICATION VIDEO



### 1 Primer

Roll 2 layers of Strato® Primer on the entire surface. Allow 30 minutes to dry between the layers.

Tool: Roller

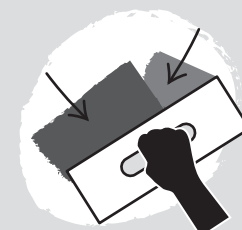
(The primer can be diluted with maximum 5% of clean water)



### 2 Sanding

Sand the entire surface in circular motion to ensure the surface is smooth.

Tool: 600 Grit Sand Paper



### 3 Texture Coat

Scrape Strato® Velours Texture Coat randomly to create pattern. Ensure the whole surface area is covered. Then apply second layer.

Tool: Stainless Steel Trowel

(use a larger trowel for a larger pattern, a smaller trowel for smaller pattern)



### 4 Sanding (OPTIONAL)

Sand the entire surface in circular motion to enhance the pattern.

Tool: 600 Grit Sand Paper



### 5 Topcoat

Apply SR-Top 1 on entire surface using a dry sponge in circular motions.

**IMPORTANT:** Use a clean and dry sponge or cleaning cloth to wipe the excess topcoat before it dries to avoid the sponge marks.

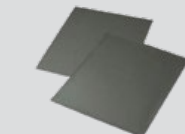
Tool: Sponge / Cleaning Cloth

**IMPORTANT:** Color may vary on application technique & amount of material used.

#### Tools:



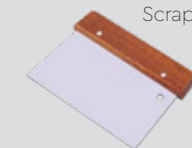
Trowel  
or  
Scraper



Sand Paper (600 Grit)



Roller



Cleaning Cloth



Sponge



# Strato® cashmere

Strato® Cashmere embodies the pinnacle of elegance in textured coating. Achieved through smooth layering and delicate craftsmanship, the finished product gives a refined and royal appearance with a lingering hint of sophistication.

• INTERIOR ONLY

## Features

Low VOC & Odor



Formaldehyde & Lead Free



Green Choice, Water Based & Eco-friendly



Easy, Quick Application & DIY Friendly



Easy Maintenance

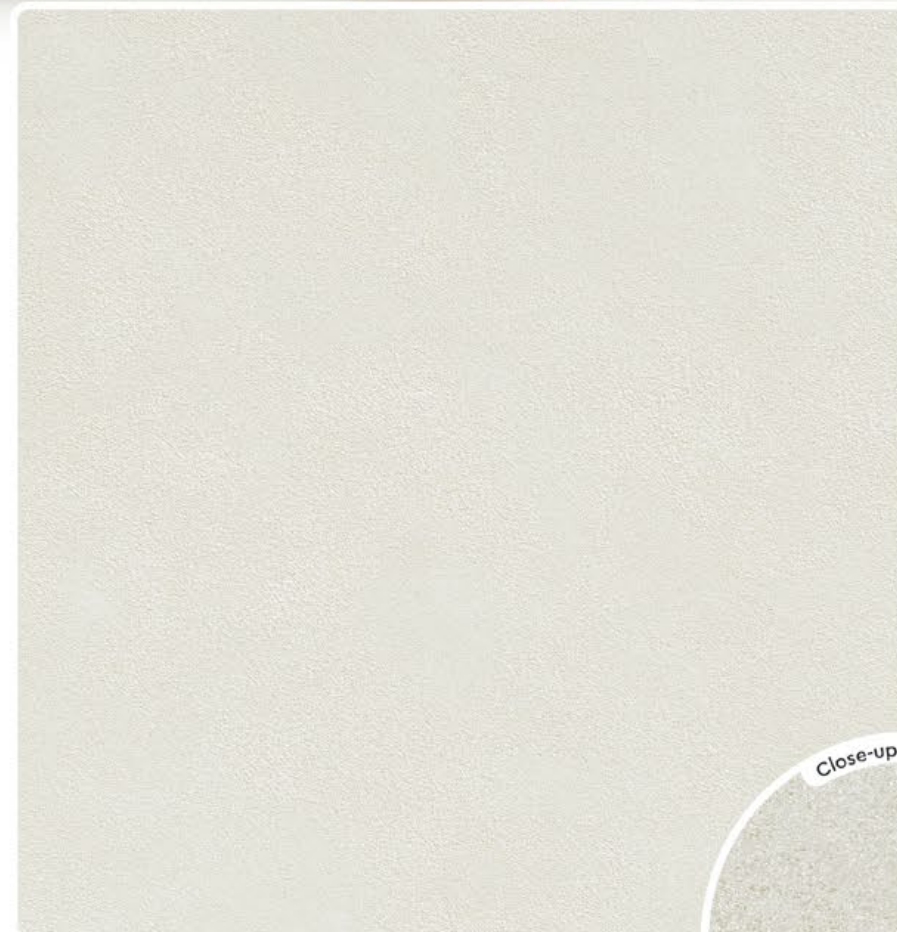




Silver Slate  
| SCH-003



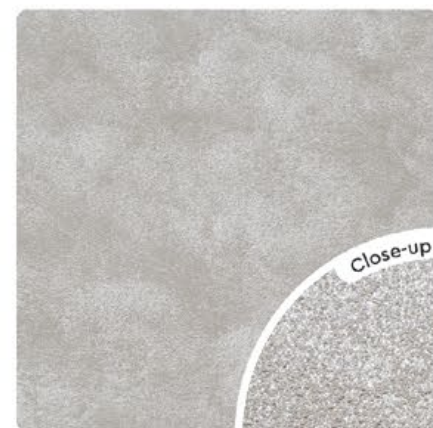
Sandcastle Beige  
| SCH-006



Pearl White | SCH-001



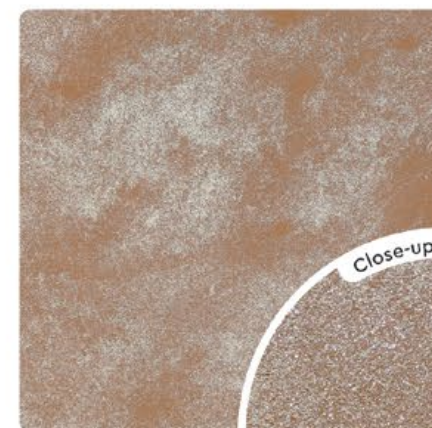
Silver Mist | SCH-002



Silver Slate | SCH-003



Platinum Metal | SCH-004

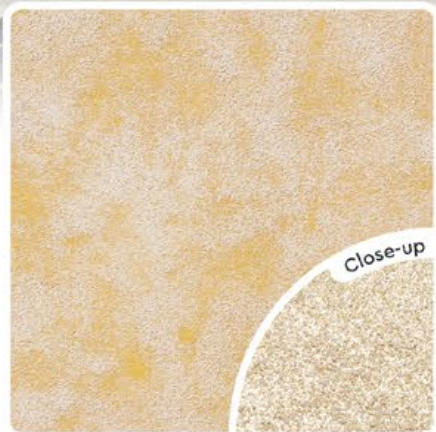


Bronze Age | SCH-005



Sand Castle Beige | SCH-006





Autumn Beige | **SCH-007**



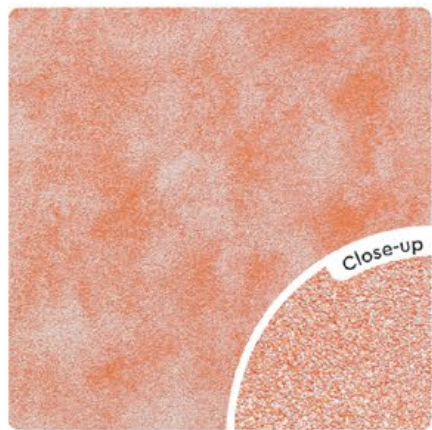
Eggshell Beige | **SCH-008**



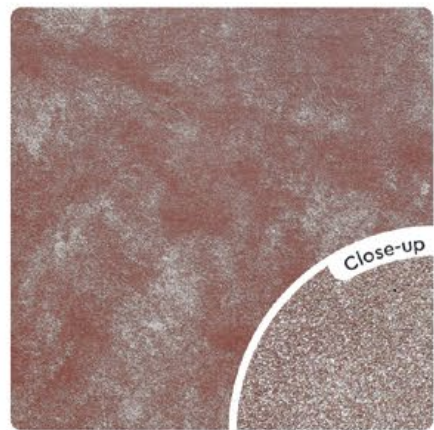
Desert Gold | **SCH-009**



Honey Yellow | **SCH-010**



Peach Blossom | **SCH-011**



Plum Sunset | **SCH-012**



Baby Doll Pink | **SCH-013**



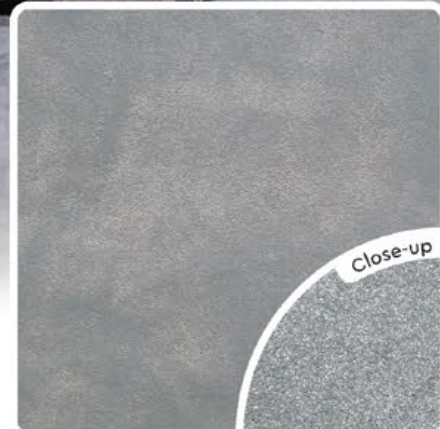
Coral Blush | **SCH-014**



Powder Blue | **SCH-015**



Peacock Blue  
| SCH-019



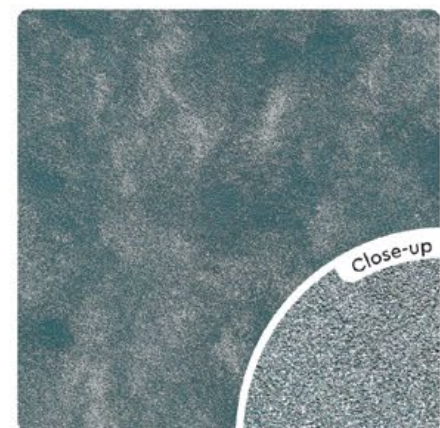
Stardust Silver | SCH-016



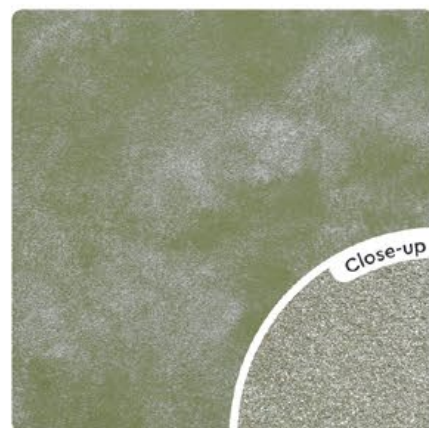
Lace Blue | SCH-017



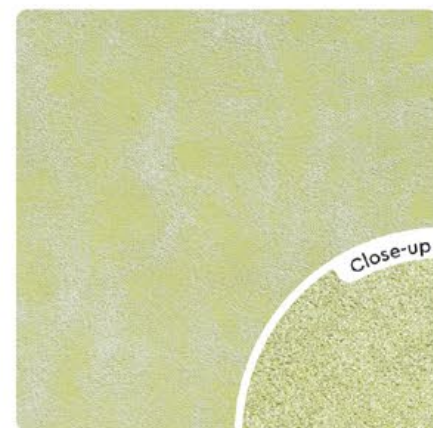
Ash Grey | SCH-018



Peacock Blue | SCH-019



Olive Tree | SCH-020



Tropical Green | SCH-021



#### PACKING DATA:

1L Primer | 1L Texture Coat | 1L Topcoat (SR-Top 3)

COVERAGE: 6-7sqm (WALL) | 5-6sqm (CEILING)  
(Per set)

## APPLICATION TECHNIQUE



APPLICATION VIDEO



### 1 Primer

Roll 2 layers of Strato® Primer on the entire surface. Allow 30 minutes to dry between the layers.

Tool: Roller

(The primer can be diluted with maximum 5% of clean water)



### 2 Texture Coat

Brush on Strato® Cashmere Texture Coat in criss cross patterns. Apply 1-2 layers. Ensure the whole surface area is covered.

Tool: Brush



### 3 Flatten

Flatten the entire surface in circular motion to enhance the pattern.

Tool: Plastic Spatula



### 4 Topcoat

Evenly roll SR-Top 3 on entire surface. Allow to dry for 1 hour.

Tool: Roller

Tools:



Roller



Plastic Spatula



Brush



Strato.<sup>®</sup>  
taffeta

A vibrant color layered in texture and dusted with a shimmering pearl effect crafts a bold and radiant feel onto the wall.

• INTERIOR ONLY

Features

Low VOC & Odor



Formaldehyde & Lead Free



Green Choice, Water Based & Eco-friendly



Easy, Quick Application & DIY Friendly



Easy Maintenance





□ Light Steel Blue  
| **SRT-203**

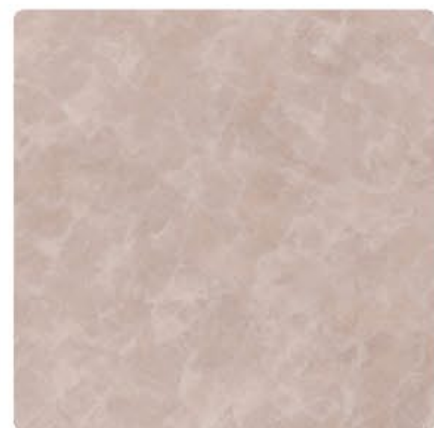
□ Oyster Beige  
| **SRT-219**



Pewter Grey | **SRT-201**



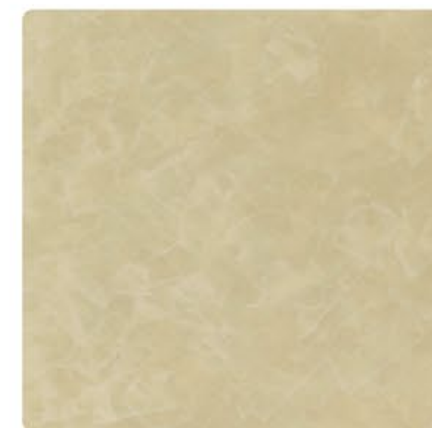
Light Steel Blue | **SRT-203**



Light Sepia | **SRT-209**



Light Sapphire | **SRT-214**




Oyster Beige | **SRT-219**



Blue Waves | **SRT-225**



 Pale Lavender  
| **SRT-232**



Malted Mocha | **SRT-231**



Pale Lavender | **SRT-232**



Ocean Surface | **SRT-233**

 Blue Waves  
| **SRT-225**



#### PACKING DATA:

**1L** Primer | **1L** Texture Coat | **0.5L** Topcoat (SR-Top 2)

**COVERAGE:** **4.5sqm** (WALL) | **3.5sqm** (CEILING)  
(Per set)

## APPLICATION TECHNIQUE



APPLICATION VIDEO

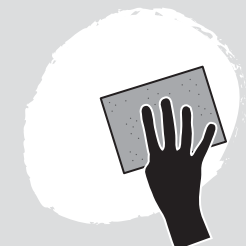


### 1 Primer

Roll 2 layers of Strato® Primer on the entire surface. Allow 30 minutes to dry between the layers.

**Tool: Roller**

(The primer can be diluted with maximum 5% of clean water)



### 2 Sanding (OPTIONAL)

Sand the entire surface in circular motion to ensure the surface is smooth.

**Tool: 600 Grit Sand Paper**



### 3 Texture Coat

Scrape Strato® Taffeta Texture Coat in a random criss cross pattern. 2-3 layers. Every layer requires 30 minutes to dry.

**Tool: Steel Spatula**



### 4 Sanding

Sand the entire surface in circular motion to enhance the pattern

**Tool: 600 Grit Sand Paper**



### 5 Topcoat

Scrape on Strato® Topcoat SR-Top 2 in a random criss cross overlapping patterns. Allow 1 hour to dry

**Tool: Steel Spatula**

✧✧✧ Taffeta has a **shimmering** pearl effect topcoat. For a **matte** finishing, please request **SR-Top 1**.

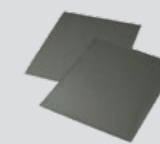
Tools:



Roller



Steel Spatula



Sand Paper (600 Grit)